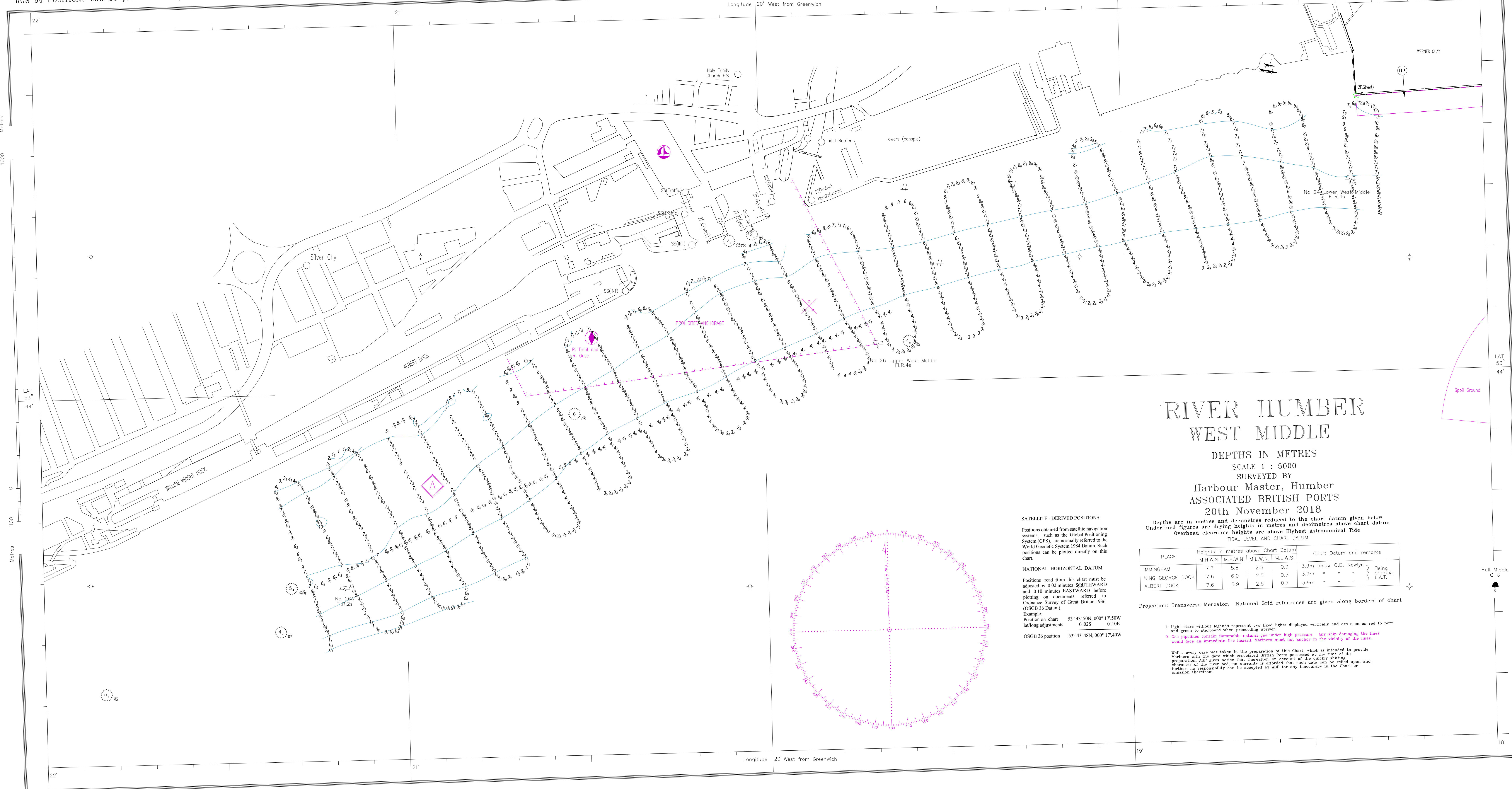


WGS 84 POSITIONS can be plotted directly on this chart



RIVER HUMBER WEST MIDDLE

DEPTHS IN METRES
SCALE 1 : 5000
SURVEYED BY

Harbour Master, Humber
ASSOCIATED BRITISH PORTS
20th November 2018

Depths are in metres and decimetres reduced to the chart datum given below
Underlined figures are drying heights in metres and decimetres above chart datum
Overhead clearance heights are above Highest Astronomical Tide
TIDAL LEVEL AND CHART DATUM

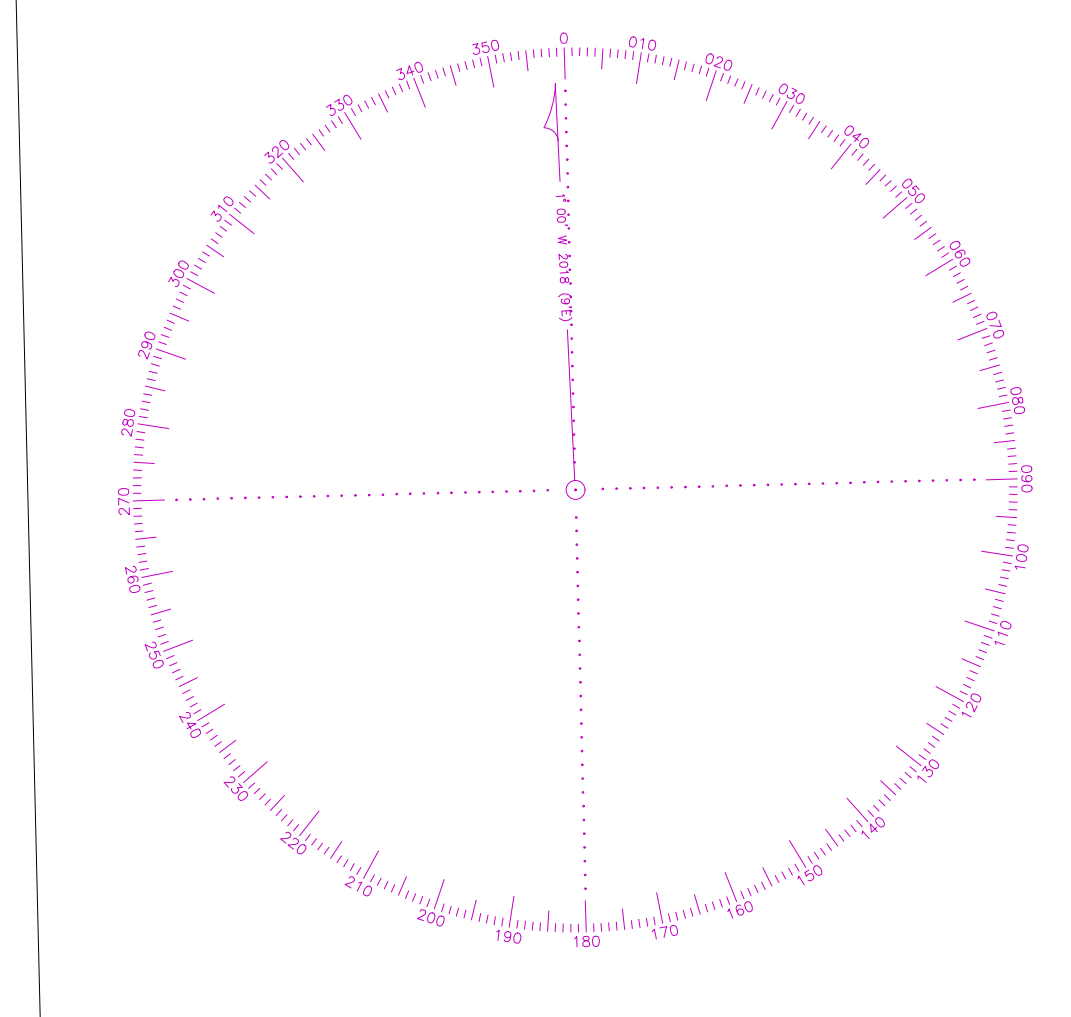
PLACE	Heights in metres above Chart Datum				Chart Datum and remarks
	M.H.W.S.	M.H.W.N.	M.L.W.N.	M.L.W.S.	
IMMINGHAM	7.3	5.8	2.6	0.9	3.9m below O.D. Newlyn
KING GEORGE DOCK	7.6	6.0	2.5	0.7	3.9m - - - - - } Being approx. L.A.T.
ALBERT DOCK	7.6	5.9	2.5	0.7	3.9m - - - - -

SATELLITE - DERIVED POSITIONS

Positions obtained from satellite navigation systems, such as the Global Positioning System (GPS), are normally referred to the World Geodetic System 1984 Datum. Such positions can be plotted directly on this chart.

NATIONAL HORIZONTAL DATUM

Positions read from this chart must be adjusted by 0.02 minutes SOUTHWARD and 0.10 minutes EASTWARD before plotting on documents referred to Ordnance Survey of Great Britain 1936 (OSGB 36 Datum).
Example:
Position on chart 53° 43' 50N, 000° 17' 50W
lat/long adjustments 0.02S 0.10E
OSGB 36 position 53° 43' 48N, 000° 17' 40W



Projection: Transverse Mercator. National Grid references are given along borders of chart

- Light stars without legends represent two fixed lights displayed vertically and are seen as red to port and green to starboard when proceeding upriver.
 - Gas pipelines contain flammable natural gas under high pressure. Any ship damaging the lines would face an immediate fire hazard. Mariners must not anchor in the vicinity of the lines.
- Whilst every care was taken in the preparation of this Chart, which is intended to provide Mariners with the data which Associated British Ports possessed at the time of its preparation, ABP gives notice that, thereafter, on account of the quickly shifting character of the river bed, no warranty is afforded that such data can be relied upon and, further, no responsibility can be accepted by ABP for any inaccuracy in the Chart or omission therefrom.

Hull Middle
Q G